



CYCLOPS-series

Ultra-Compact Bluetooth® Scanner

compatible with smartphones and tablet running on iOS, Android, or Windows

Spotlight on Features

- Support both HID and SPP connection
- Provide 1D (CYCLOPS-I) and 2D (CYCLOPS-II) barcode reading solutions
- 3.7V, 720mAH Li-Ion battery pack supports long working hours
- Perfect wireless barcode data capture device for mobile operations (Smart phone, iPad, Tablet, and Desktop PC's)
- 2MB Flash ROM for data storage in batch mode
- USB 2.0 Client Compatible
- Ultra compact size and ergonomics design minimizing operation fatigue
- Built-in RTC giving time-stamp on each scanned data
- IP 54 high-level industrial protection maximizing application reliability



Application Snapshots

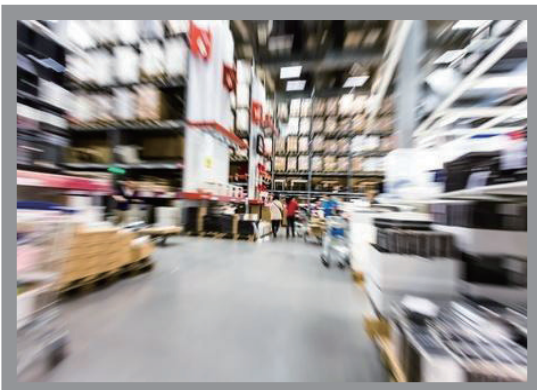
Stylish and Lightweight (Luxury Cloud-POS Applications)

Designed for mobile operations, CYCLOPS-I is stylish and light weighted. Only 50-gram in your hand, both its appearance and color tone match seamlessly with the contemporary Cloud-POS atmosphere in classy stores and shops. Depending on your barcode reading demands, the CYCLOPS-series gives both 1D version and 2D version for best cost structure arrangements. To enhance the overall quality of retail, hospitality, and healthcare service points, CYCLOPS-series will be your only and best ever choice.



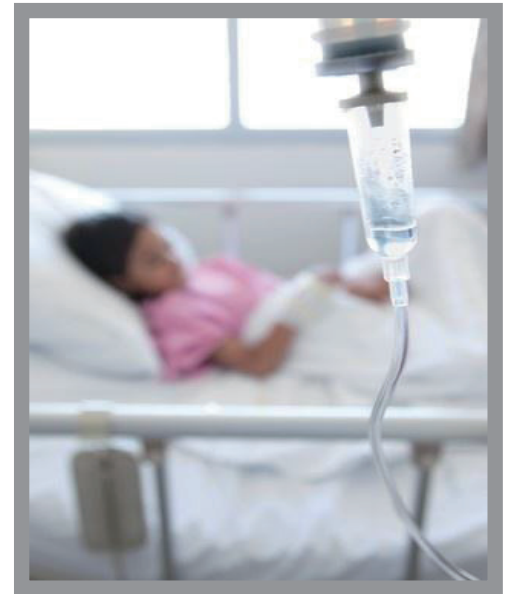
Long Working Hours and Tough Product Structure Design (for Real World Mobile Applications)

With 720-mAH Li-ion rechargeable battery pack and precision power management algorithm, CYCLOPS-series gives long working hours of up to 15-Hr (15,000 scans) to support extended duty hours in the real world retail operations. Delicate engineering design has provided CYCLOPS-series elegant appearance but with strong internal structure. Not only surviving 2-meter multiple drop on concrete, the CYCLOPS-series also passed IP-54 dust and water resistant tests to ensure every unit of the CYCLOPS-series family members can work with you in every possible real world mobile applications.



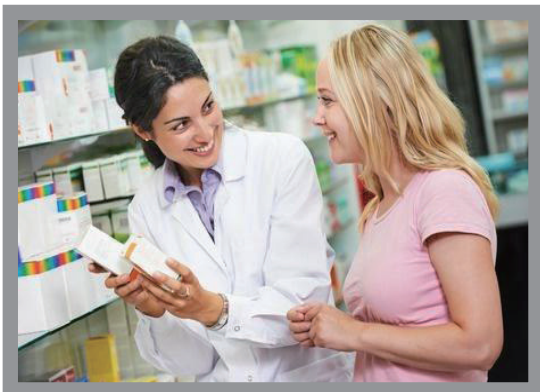
Real Time Clock Built-in (for Time-Sensitive Data Capture Tasks)

CYCLOPS-series is implemented with Real Time Clock (system clock) feature which is critical for time-sensitive data capture tasks. Configured via USB link through the host, internal clock can be activated and, under batch mode, each scanned data will be added with time stamp and year/date/hour/min/sec will be associated with each barcode data scanned. The internal Real Time Clock will continue running without interruption unless the main battery is removed. This feature is very useful while time-sensitive data capture tasks are performed in hospitality services (for example, dish ordering time), healthcare services (for example, patient bed side checking time), and entertainment services (for example, ticket entry time). With CYCLOPS-series in hand, all these tasks can be carried out elegantly and smoothly with accuracy.



Adopt Versatile Wireless Configuration (Barcode Data Capture Applications)

Barcode data capture is the critical step in all business operations. Not only a mis-read barcode data may never be seen again, but also a mis-read barcode data may lead to various operation problems. So, accurate reading is the “must” of barcode data capture tasks. Implemented with high performance scan engine, the CYCLOPS-series give accurate yet snappy readings on both 1-D and 2-D barcode. 2MB F-ROM memory provides ample space to store off-line or batch barcode data scanned.



Reliable and High Performance Scanning (for Serious Data Capture Tasks)

CYCLOPS-series is designed based on Bluetooth standard for maximized compatibilities with various wireless devices such as smart phone (including iPhone · Xperia & Galaxy), iPad, tablet or desktop PC's. With simple 1 -button aim-and-shoot scanning design, the CYCLOPS-series provides convenient and easy way to collect barcode data even for un-experienced users. Moreover, attractive visual LED's and audio buzzer give instant feedback on the scanning result and battery capacity status. CYCLOPS-series also adopts the most contemporary application demands like reading cell phone and tablet/NB screen barcode coupons. These features make CYCLOPS-series the best product for all mobile data capture applications.



CYCLOPS series

Ultra - Compact Bluetooth Scanner



Model		CYCLOPS 1	CYCLOPS 2	
Performance	Receiving Device	Linear CCD imager	CMOS imager	
	Sensor Resolution	CCD sensor, 1,500 pixels	CMOS, 1,280 x 800 pixels	
	Light Source	Visible LED 625nm	one 610nm Aiming LED,	
	Optical Resolution	5 mil	4mil code39 , 5mil PDF	
	Scan Rate	nominally 100 scans/ second	60-Frame/sec	
	Printing Contrast	20% Minimum		
	Ambient Light	110,000 Lux	110,000 Lux	
	Reading distance	38mm~610mm	Depending on 1D or 2D	
	Memory	2MB Flash ROM	32MB Flash ROM / 128MB SDRAM	
Corresponding code		10,000 min scan data storage		
		UPC, EAN, Code128, Code39, Code93, Code 11, ITF (Inter l eaved 2 of 5), Discrete 2 of 5, Chinese 2 of 5, Matrix 2 of 5, Codebar (NW7), MSI, GS1DataBar Omnidirectional, GS1DataBar Limited, GS1DataBar Expanded	UPC-A,UPC-A Add-on, UPC-E, UPC-E Add-on, JAN/EAN-13, JAN/EAN-13 Add-on, JAN/EAN-8, JAN/EAN-8 Add-on, Code128, Code39, NW-7 (Codabar) Interleaved 2 of 5(ITF), GS1 DataBar Omnidirectional, GS1 DataBar Truncated, GS1 DataBar Stacked, GS1 DataBar Stacked Omnidirectional, GS1 DataBar Limited, GS1 DataBar Expanded, GS1 DataBar Expanded Stacked, Composite CC-A/B 、 Composite CC-C, Postal Codes, PDF417, MicroPDF417, Aztec Data Matrix, MaxiCode, QR Code, Micro QR	
Key		Scan key / Function key/ Reset key		
Physical	Dimension	H13.4*W38*L85mm	H15.9*W38*L90mm	
	Weight	50g	67g	
Electrical	Battery Type	Li-ion 720mAh		
	Duration	15000 scan	5000 scan for 2D bar code scans	
Communication	Bluetooth (range)	Ver.2.1+EDR Class2 (10m)		
	Profile	SPP & HID		
	Software supported	Windows, iOS(5.0 above), Android (4.0 above)		
	Host Interface Supported	Mini USB		
Environment	Radio disturbance	VCCI B		
	Drop Test	2-meter※1 drop, and 1-meter Tumble Drop 100-Cycle		
	Temperature	Storage	-25°C ~ 60°C	
		Operation	-10°C ~ 50°C	
	Humidity	5% ~ 95%		
	Industrial Protection	IP54		
EMC Regulatory	BSMI/ NCC/ CE/ FCC	CE/ FCC		
Cradle	n/a	Yes		
Accessory	USB cable, Hand strap, User Guide	Cradle, Outlet cable, Hand strap, User Guide		
Warranty	3 years			

※1 Free drop on concrete. 3 times per 6 surface at room temperature

ACCESSORIES



Hand strap



USB cable



Outlet cable



Cradle

